



## Traffic lights to be installed at Anzac Parade and Sturt Street intersection

In planning for Tomorrow's Sydney we are building a new light rail line to provide modern, reliable and sustainable public transport that will transform services from Circular Quay and the CBD to Kingsford and Randwick via Surry Hills, Moore Park and Kensington.

### What we're doing in Kingsford

ALTRAC Light Rail will continue construction work on the **Anzac Parade and Sturt Street intersection in Kingsford from Friday 8 September 2017.**

This notification covers work on the Sturt Street intersection, from Friday 8 September 2017.

It also includes ongoing adjustments to kerbs, road surfaces and paving work following the installation of traffic lights.

Work may at times be subject to further approval and work periods may be extended, due to weather or unforeseen circumstances. Impacted stakeholders will be notified.

### Work location and activities

#### Intersection work:

- Intersection of Anzac Parade and Sturt Street.

Work may also take place on approaches to the intersection.

### Work times

Traffic lights will be installed at the intersection of Anzac Parade and Sturt Street and commissioned overnight from 8pm Friday 8 September 2017 to 5am Saturday 9 September 2017.

Ongoing work will also occur during standard daytime hours to minimise impacts where possible:

- Monday to Friday, 6am to 6pm.
- Saturday, 8am to 5pm.

### Details of work activities

**Intersection work:** includes rearrangement of temporary barriers, fencing and hoardings, lane changes and closures, utility investigation and treatment, removal and reinstatement of road line markings, installation of traffic signals, changes to road signage, and road reinstatement.

Equipment and vehicles for this work may include radar detection and survey equipment, concrete trucks and pumps, flood lights, vacuum excavation trucks, coring and drilling machines, excavators, compaction equipment, bobcats, cranes, saw cutters, road grinders, tipper trucks, hand tools, water carts, semi-trailers and traffic control vehicles.

### How will work affect you?

#### Traffic and pedestrian changes

**For the latest information on traffic changes please visit [livetraffic.com](http://livetraffic.com) or download the Live Traffic NSW app.**

**From 8pm Friday 8 September 2017** traffic lights will be installed at the following locations:

- On the southern side of Sturt Street as it crosses the Anzac Parade northbound and southbound carriage.
- On the eastern and western side of Sturt Street as it intersects with Anzac Parade.

The following traffic changes will be introduced:

- There will be no right turn permitted for all vehicles from the southbound carriage of Anzac Parade into Sturt Street (refer to map overleaf).

- There will be no right turn permitted for vehicles over 9m from Anzac Parade northbound carriage into Sturt Street eastbound.
- The midblock pedestrian crossing between Wallace Street and Sturt Street, in front of The Juniors, will be closed and replaced by the signalised crossing at Sturt Street.
- Closure of the western side footpath on Anzac Parade (southbound carriage), adjacent to the light rail worksite. Pedestrians will be able to use the eastern side of Anzac Parade, guided by the new traffic lights.
- Removal of some parking spaces from the car park is required to accommodate the new traffic lights and pedestrian access.

Anzac Parade will remain open during all work. Two traffic lanes will generally be maintained in both directions.

Some traffic signage may be temporarily or permanently changed before and during the work.

Motorists should follow directional signage and drive to conditions.

Cyclists may continue to use existing traffic lanes. However, cyclists are recommended to use alternative routes away from Anzac Parade, especially in areas where construction has commenced.

### Public transport changes

Buses on Anzac Parade will continue as normal during this phase of construction.

The taxi rank on the eastern side of Anzac Parade between Wallace Street and Sturt Street will be relocated 20 meters further to the south.

### Noise and dust

You may experience some noise and vibration during this work. Where possible, the noisiest work will be scheduled during the daytime and evening.

Noise and vibration monitoring will be conducted and, where practical, mitigation measures such as noise blankets will be used to minimise impacts as much as possible. Vehicles will be switched off when not in use to minimise noise.

Respite periods will be provided for high noise work, such as saw cutting, jack hammering and rock breaking. Where required, any dust generating activities will be watered down.

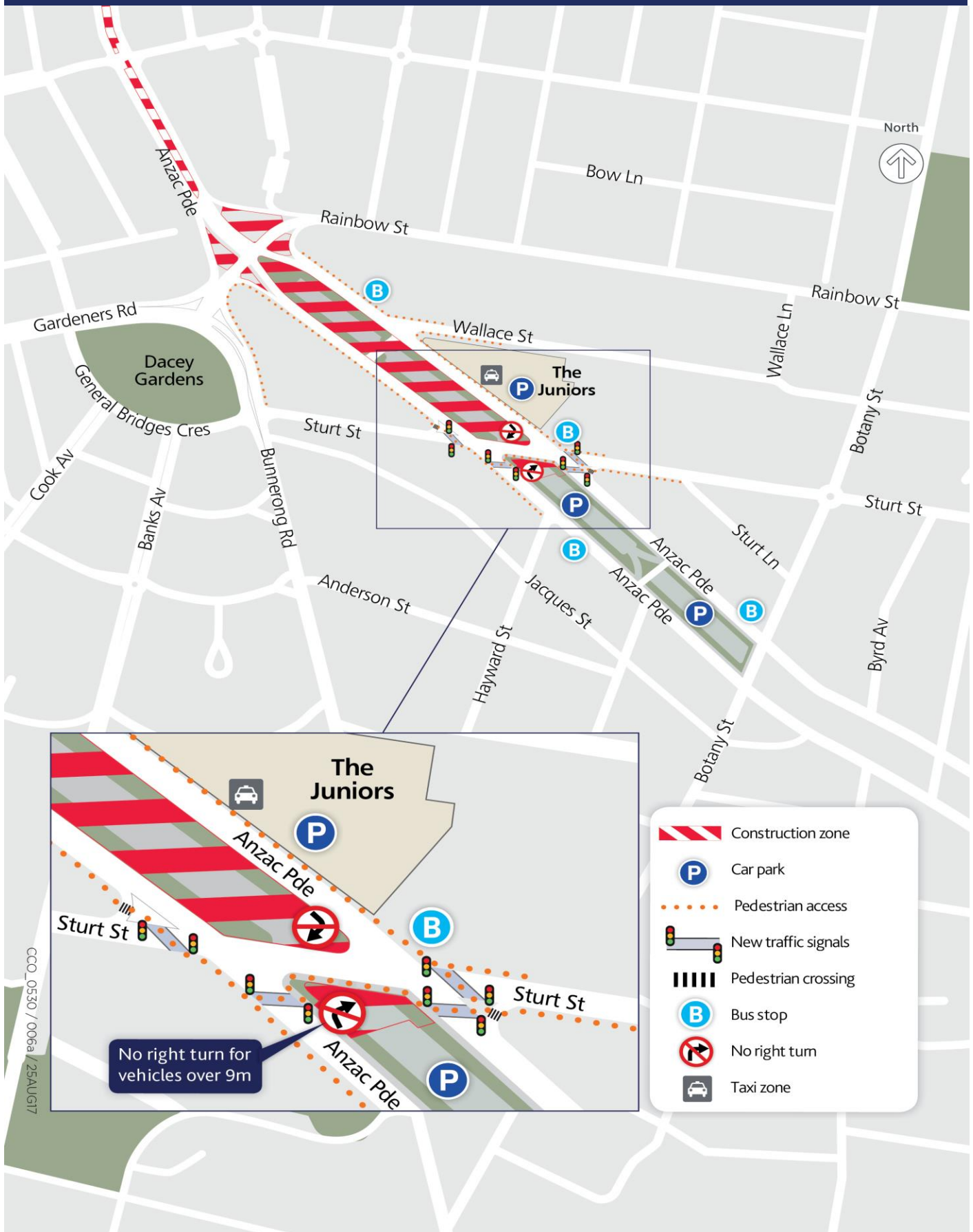
Every effort will be made to reduce the impact to residents and businesses while work takes place.

### Keeping you informed

Construction of the light rail will continue in your area in addition to this work. You will receive periodic updates as work progresses in your area and advanced notification of any night and weekend work.

Please visit [sydneylightrail.com.au](https://sydneylightrail.com.au) for all current construction notifications.

To keep you informed of the latest project updates, notification of upcoming work and invitations to local community and business forums, we encourage you to provide us with your contact details by emailing [SLRCommunity@acciona.com.au](mailto:SLRCommunity@acciona.com.au)





## Contact information

We apologise for any disruption or inconvenience caused during this important work. For general project enquiries, please call **1800 684 490** or email **projects@transport.nsw.gov.au**. If you have any urgent enquiries or complaints during this work, please contact the **24-hour Construction Response Line on 1800 775 465**.

To find out more information on the CBD and South East Light Rail, visit **sydneylightrail.com.au** and for further detail on CBD changes, visit **mysydneycbd.nsw.gov.au**.

For the latest information on traffic changes, please visit **livetraffic.com** or **download the Live Traffic NSW App**.



### Translating and Interpreting Services

If you require the services of an interpreter, please contact the Translating and Interpreting Service (TIS) on **131 450** and provide this number: **1800 893 260**.

#### Simplified Chinese/Mandarin

如果您需要传译服务，请致电翻译及传译服务 (TIS) **131 450**，并提供以下号码：**1800 893 260**。

#### Traditional Chinese/ Cantonese

如果你需要傳譯服務，請致電**131 450**「電話傳譯服務」(TIS)。撥通電話后請向話務員報上這個號碼：**1800 893 260**。

#### Greek

Εάν χρειάζεστε τις υπηρεσίες διερμηνέα, παρακαλείστε να επικοινωνήσετε με την Υπηρεσία Μετάφρασης και Διερμηνείας (TIS) στο **131 450** και δώστε τους τον αριθμό: **1800 893 260**.

#### Indonesian

Jika Anda memerlukan layanan penterjemah, silahkan menghubungi Translating and Interpreting Service (TIS) pada nomor **131 450** dan berikan nomor berikut ini: **1800 893 260**.

#### Russian

Если вам требуются услуги переводчика, обратитесь в Службу письменных и устных переводов TIS по телефону **131 450** и назовите следующий номер: **1800 893 260**.

#### Spanish

Si necesita los servicios de un intérprete, llame al Servicio de Traducción e Interpretación (TIS) al **131 450** y dé el número **1800 893 260**.